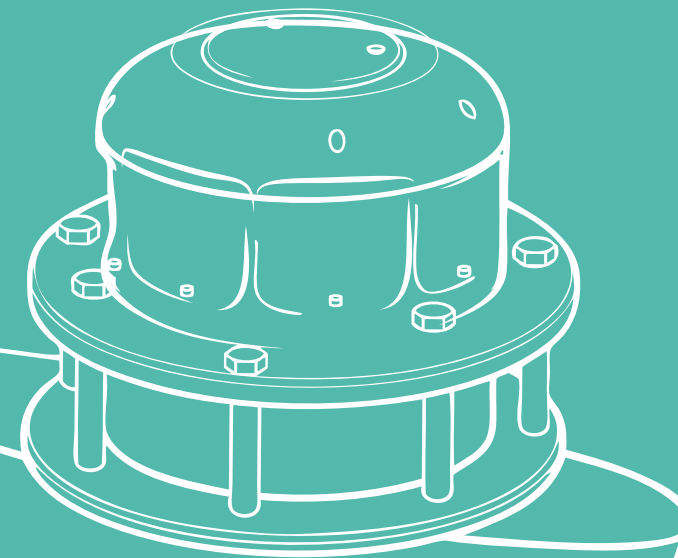




THE SMART LINE OF BALANCE

 **waveless**
by CMC MARINE



Waveless Stab is the new generation of electric fin stabilizers: fast, ultra compact, low noise, low power, top quality.

NEW ELECTRIC GENERATION

Waveless is the new line of ultracompact electric stabilizers designed for boats of 12 meters in length and up, offering STAB stabilizer models and TRIM intruder models. Same quality and performance as superyachts CMC systems customized for smaller yacht needs.

INTEGRATED STABILIZATION SYSTEM

CMC Marine’s has established its industry leadership for motion control, through a full range of solutions. Every system is an assembly of the most advanced, robotic-industry standard technologies, made to work with the highest standards of performance, accuracy, fast response, reliability and energy efficiency. All systems can operate independently whenever required, but maximum performance is achieved when they work together, controlled by the same algorithm, processor and motion sensors.



TOP QUALITY

Best-in-class roll reduction both Underway and At Anchor, with softer (lower acceleration) yacht motion for unequalled comfort.



LOW NOISE

Silent! Negligible noise and vibration, often installed under Owner’s or VIP’s beds.



ULTRA COMPACT

The smallest unit has onboard dimensions of 38 centimeters in diameter and 22 centimeters in height.



LOW POWER

High efficiency (>85%) means lower power demand on generators and reduced energy consumption.



FAST

Immediate ON/OFF mode.



LOWER MAINTENANCE

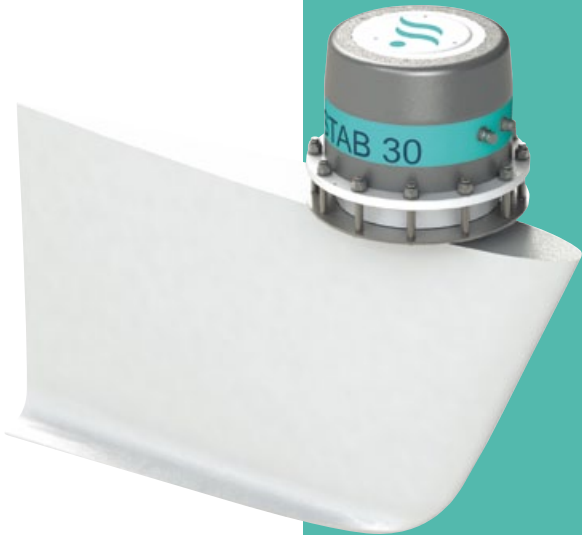
Zero maintenance required on electrical motor and gearbox. Remote assistance options for online, real-time diagnostics.

STAB

Waveless STAB is the new generation of electric fin stabilizers: fast, ultra compact, easy to use and install, low noise, low power absorption, top quality.

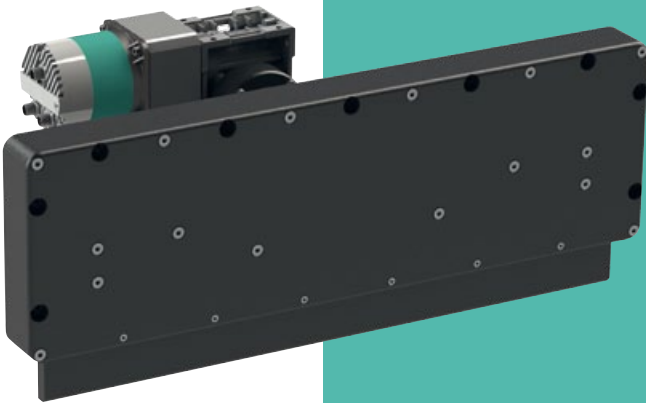
The technology, experience and quality of superyachts, now available for your yacht.

For yacht starting from 12m (40 ft) LOA up to 40m (130 ft).



TRIM

Waveless Trim is a modular trim control system. Light, fast and robust, can be integrated with Waveless STAB for perfect yacht control.



STAB

Power supply

25	30	40	50
200–240 V AC 1ph 50/60 Hz optional: 24 V DC	200–240 V AC 1ph 50/60 Hz optional: 24 V DC	200–240 V AC 1/3ph 50/60 Hz optional: 380–480 V AC 3ph 50/60Hz	380–480 V AC 3ph 50/60Hz

Motor rated power

2,0 kW	3,0 kW	5,0 kW	7,0 kW
--------	--------	--------	--------

Weight (actuator only)

35 kg [77 lbs] each	50 kg [110 lbs] each	80 kg [176 lbs] each	90 kg [198 lbs] each
---------------------	----------------------	----------------------	----------------------

Available fins size

0,50 sqm 0,65 sqm	0,80 sqm 0,98 sqm	1,20 sqm 1,50 sqm	1,70 sqm 1,90 sqm
----------------------	----------------------	----------------------	----------------------

Fin installation

Flange mounting Ø 216 mm [8.5 in]	Flange mounting Ø 265 mm [10.4 in]	Flange mounting Ø 300 mm [11.8 in]	SAF 2205 Shaft Ø 100 mm [3.9 in]
--------------------------------------	---------------------------------------	---------------------------------------	-------------------------------------

Noise

< 48 dB (Underway) < 52 dB (At anchor)	< 48 dB (Underway) < 52 dB (At anchor)	< 48 dB (Underway) < 52 dB (At anchor)	< 48 dB (Underway) < 52 dB (At anchor)
---	---	---	---

TRIM

Blade size

350	600	900	1100
350 mm	600 mm	900 mm	1100 mm

Blade stroke

50 mm in 0.5 s	50 mm in 0.5 s	70 mm in 0.7 s	70 mm in 0.7 s
----------------	----------------	----------------	----------------

Power

0,15 kW 12–36 V DC	0,15 kW 12–36 V DC	0,15 kW 12–36 V DC	0,15 kW 12–36 V DC
--------------------	--------------------	--------------------	--------------------

Weight

6,5 kg [14 lbs]	10 kg [22 lbs]	19 kg [42 lbs]	24 kg [53 lbs]
-----------------	----------------	----------------	----------------

QUICK INSTALLATION

Waveless STAB is designed to be installed easily in just 5 QUICK STEPS

01

Prepare the hull with the required thickness for the installation and cut the hole for the STAB actuator (don't forget the holes for the bolts too!).

02

Insert the STAB actuator in the hole (no matter the position) from inside the hull and seal it with chockfast.

03

Place the counter flange on the outside and secure the STAB actuator to the hull using the bolts.

04

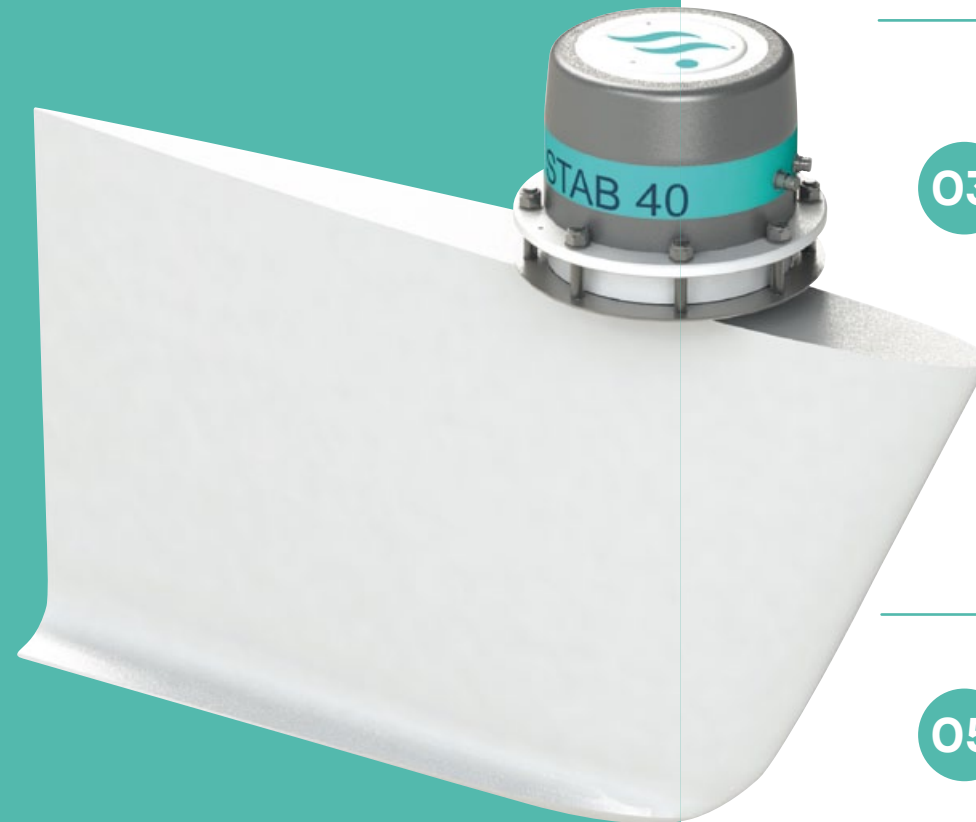
Place the fin flange on flange with the STAB actuator and fasten the bolts.

05

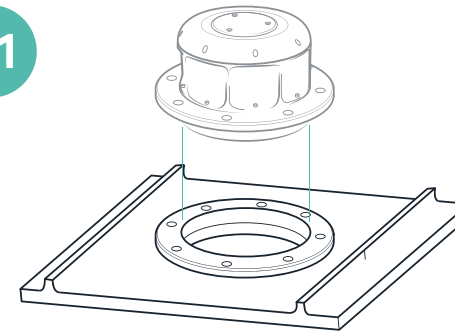
Plug in the power cable and encoder cable connectors.

GO!

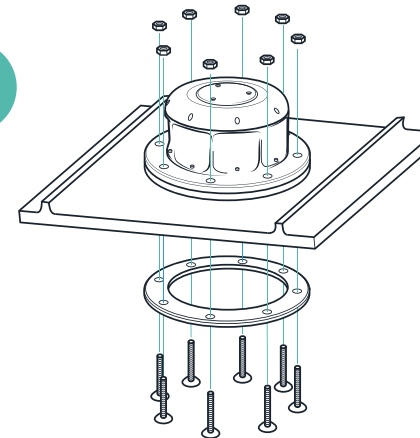
Enjoy your yacht!



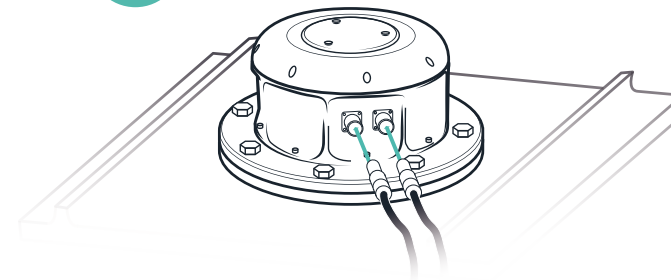
01



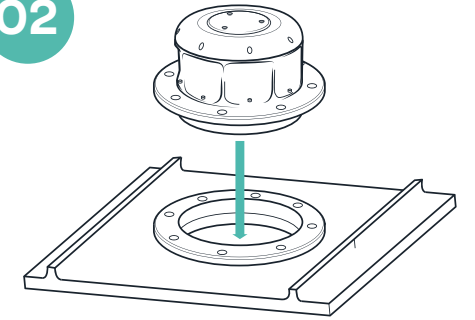
03



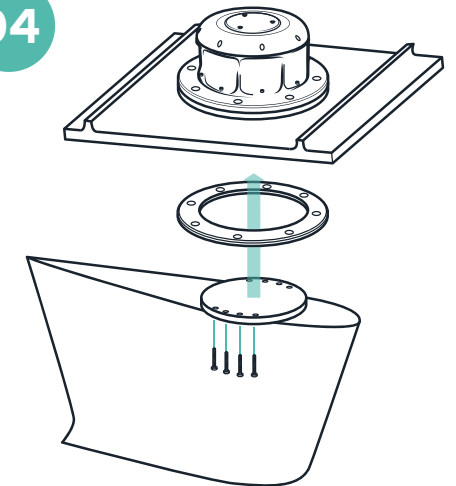
05



02



04





CMC Marine is a leading company in designing, manufacturing and selling the most sophisticated electric stabilisation systems, rudders and bow thrusters for yachts and passenger ships. In 2019 CMC launches Waveless: the new line designed for installation on medium to large-sized yachts from 12 meters in length and up, rewarded during the Genoa Boat Show as the best Design Accessory.

CMC MARINE INTERNATIONAL PRESENCE

CMC Marine headquarters are in Milan (Italy) with production facility is located in Pisa (Italy) and subsidiaries in London (UK) and Ft Lauderdale (USA). A global network of Service Centers and Certified Professionals guarantees immediate and professional assistance to our customers.



ITALY
CMC Marine srl
Via Francia, 16
Cascina, Pisa 56021
info@cmcmarine.com
+39 050 81 55 00



ITALY
CMC Marine srl
Via Tolentino, 2
Milano 20155
info@cmcmarine.com
+39 050 81 55 00

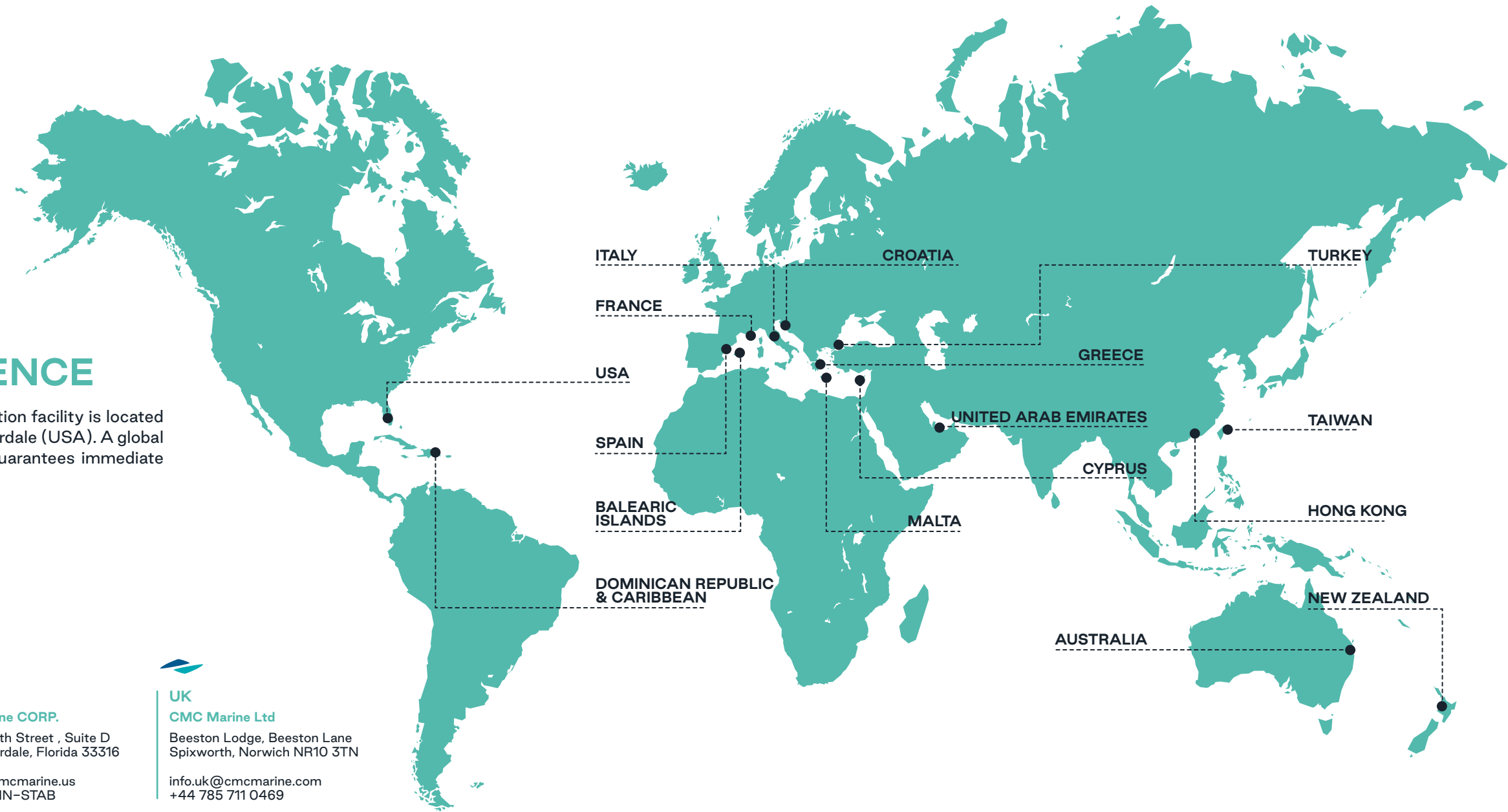


USA
CMC Marine CORP.
400 SE 12th Street , Suite D
Fort Lauderdale, Florida 33316
service@cmcmarine.us
+1 (833) FIN-STAB



UK
CMC Marine Ltd
Beeston Lodge, Beeston Lane
Spixworth, Norwich NR10 3TN
info.uk@cmcmarine.com
+44 785 711 0469

A GLOBAL SERVICE NETWORK





wavelessmarine.com